 Create pdf

Lampholders and starter holders

26.424.1001

G13 Push on lampholders



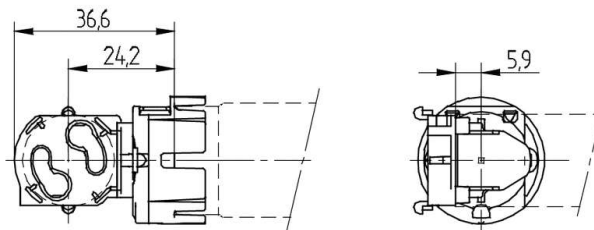
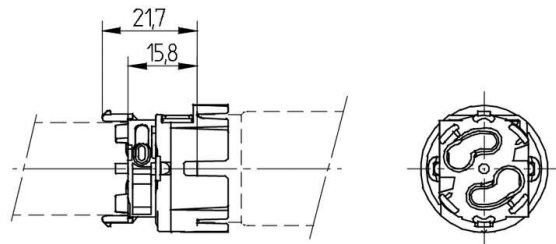
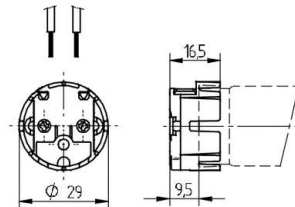
| colour | pkg. | wt. | part no. |
|--------|------|-----|----------------|
| white | 500 | 4 g | 26.424.1001.50 |

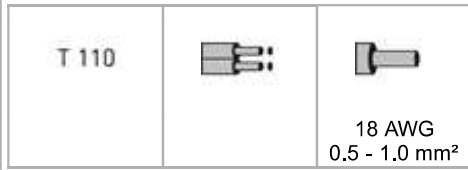
Approval: additional cULus (660W /600V)

Without fixing

Housing: PC

- The electrical connection is made by pushing the lampholder onto the lamp pins. The lamp must be supported by a supplementary component.
- Additional fixing holes for starter holders 26.515.5317 or 26.515.5301.50 at the rear.
- Lamp diameter 26 mm





Document generated on: Mo, 6. February 2017 - 11:18